

# HAP-Z1ES

## SERVICE MANUAL

Ver. 1.1 2015.11



*US Model  
Canadian Model  
AEP Model  
UK Model  
Australian Model  
Chinese Model  
Singapore Model  
Malaysia Model*

**Note:**

Be sure to keep your PC used for service and checking of this unit always updated with the latest version of your anti-virus software.  
In case a virus affected unit was found during service, contact your Service Headquarters.

### SPECIFICATIONS

#### Playback Specifications

Frequency response  
2 Hz - 80 kHz (-3 dB)

Dynamic range  
105 dB or higher

THD  
0.0015% or less

#### Network section

Wired LAN

1000BASE-T/100BASE-TX/10BASE-T

Wireless LAN

Compatible standards

IEEE 802.11 b/g/n

Frequency band/channel

2.4 GHz band: channels 1-11 (US, Canadian)

2.4 GHz band: channels 1-13

(AEP, UK, Australian, Chinese, Singapore, Malaysia)

#### HDD section

Capacity

1 TB\*

\* Some portions of the capacity are used for data management.  
Therefore, the capacity a user can use is less than 1 TB.

Supported playback format

DSD (DSF, DSDIFF), LPCM (WAV, AIFF), FLAC, ALAC, ATRAC Advanced Lossless, ATRAC, MP3, AAC, WMA (2 channels)

#### Jack section

Output jacks

LINE OUT UNBALANCED

Output level: 2.0 Vrms (50 kilohms), Impedance: 10 kilohms or higher

LINE OUT BALANCED

Output level: 2.0 Vrms (50 kilohms), Impedance: 600 ohms or higher

EXT port

Type A USB, Hi-Speed USB, for connecting an external hard disk drive

IR REMOTE OUT jack

for connecting the monaural mini-plug cable (supplied) or IR blaster (supplied)

#### General and others

Power requirements

AC 120 V 60 Hz (US, Canadian)

AC 230 V 50/60 Hz (AEP, UK, Australian)

AC 220 V 50 Hz (Chinese)

AC 230 V - 240 V 50/60 Hz (Singapore, Malaysia)

Power consumption

On: 35 W

During standby mode (when [Network Standby] is set to [Off]): 0.3 W

During standby mode (when [Network Standby] is set to [On] and a wired LAN is used): 2.6 W

During standby mode (when [Network Standby] is set to [On] and a wireless LAN is used): 2.8 W

Dimensions (approx.) (w/h/d)

430 mm × 130 mm × 390 mm (17 inch × 5 1/8 inch × 15 3/8 inch) including projecting parts and controls

Mass (approx.)

14.5 kg (32 lb 0 oz)

Supplied accessories

AC power cord (1)

Remote control (RM-ANU183) (1)

R03 (size-AAA) batteries (2)

LAN cable (1)

Monaural mini-plug cable (1)

Audio cord (1)

IR blaster (1)

Quick Start Guide (1)

Reference Guide (1)

Design and specifications are subject to change without notice.

## HDD AUDIO PLAYER

9-893-887-02

2015K33-1

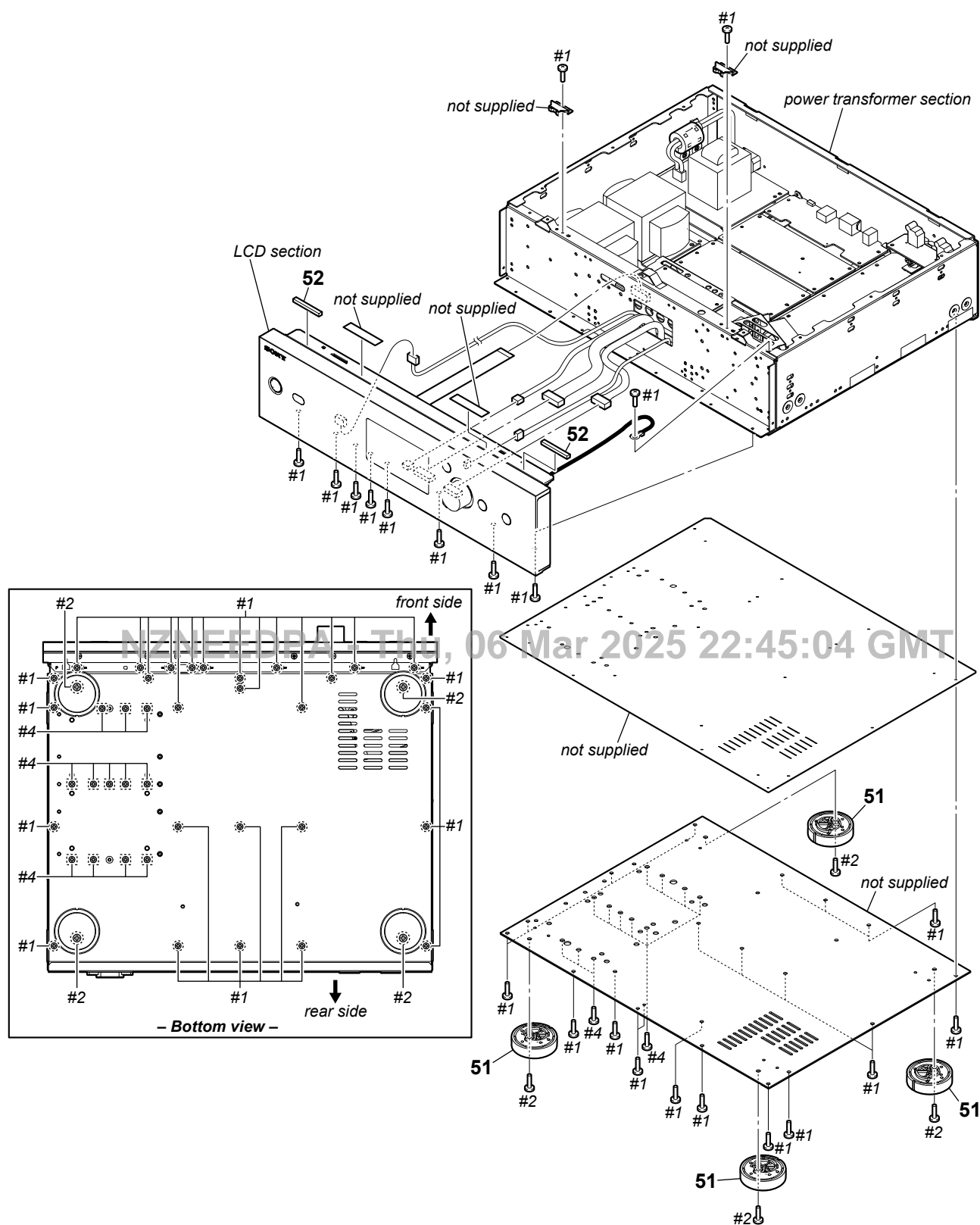
© 2015.11

Sony Video & Sound Products Inc.

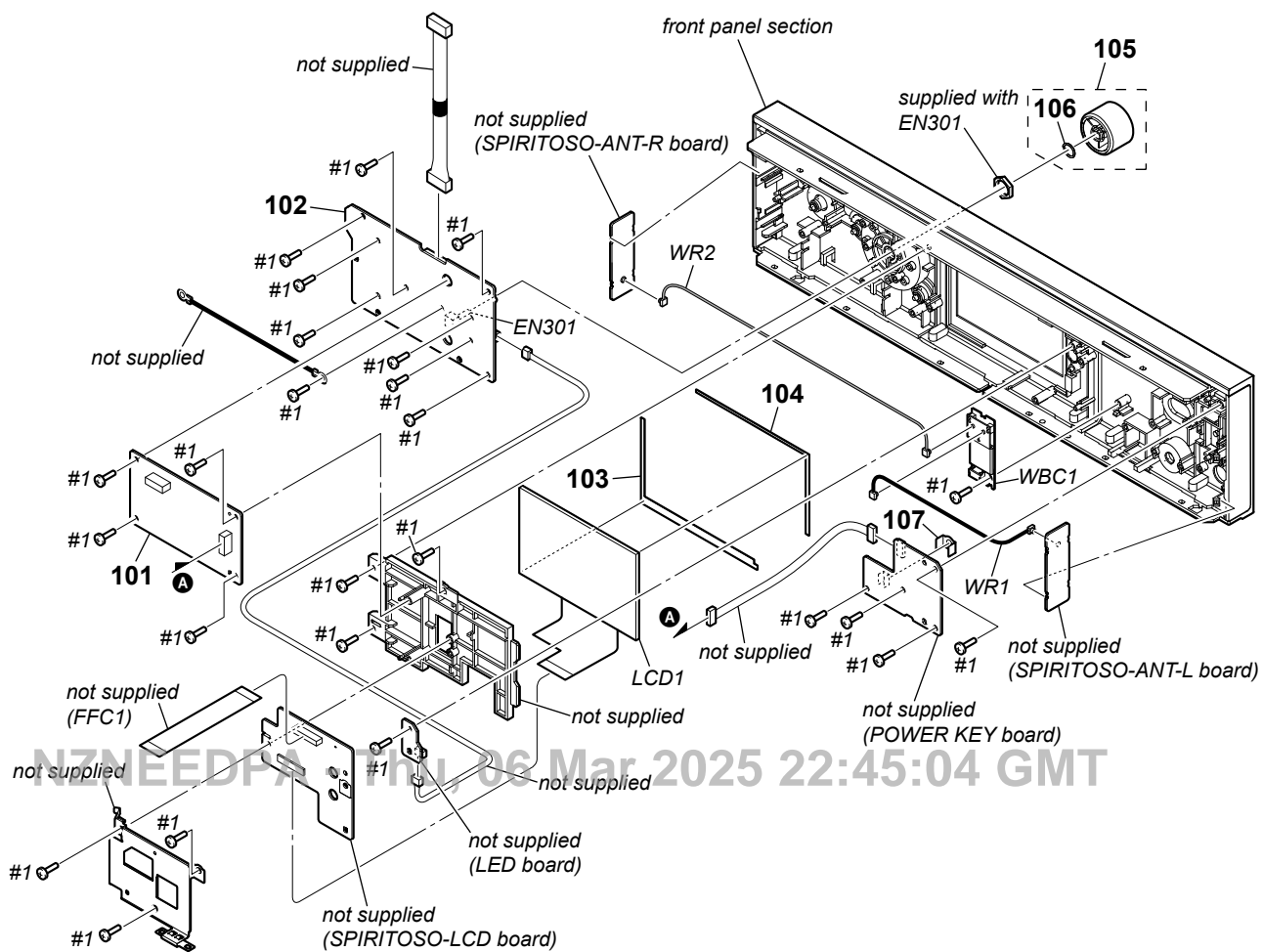
Published by Sony Techno Create Corporation

# SONY®



**6-2. BOTTOM SECTION**

- Rear view

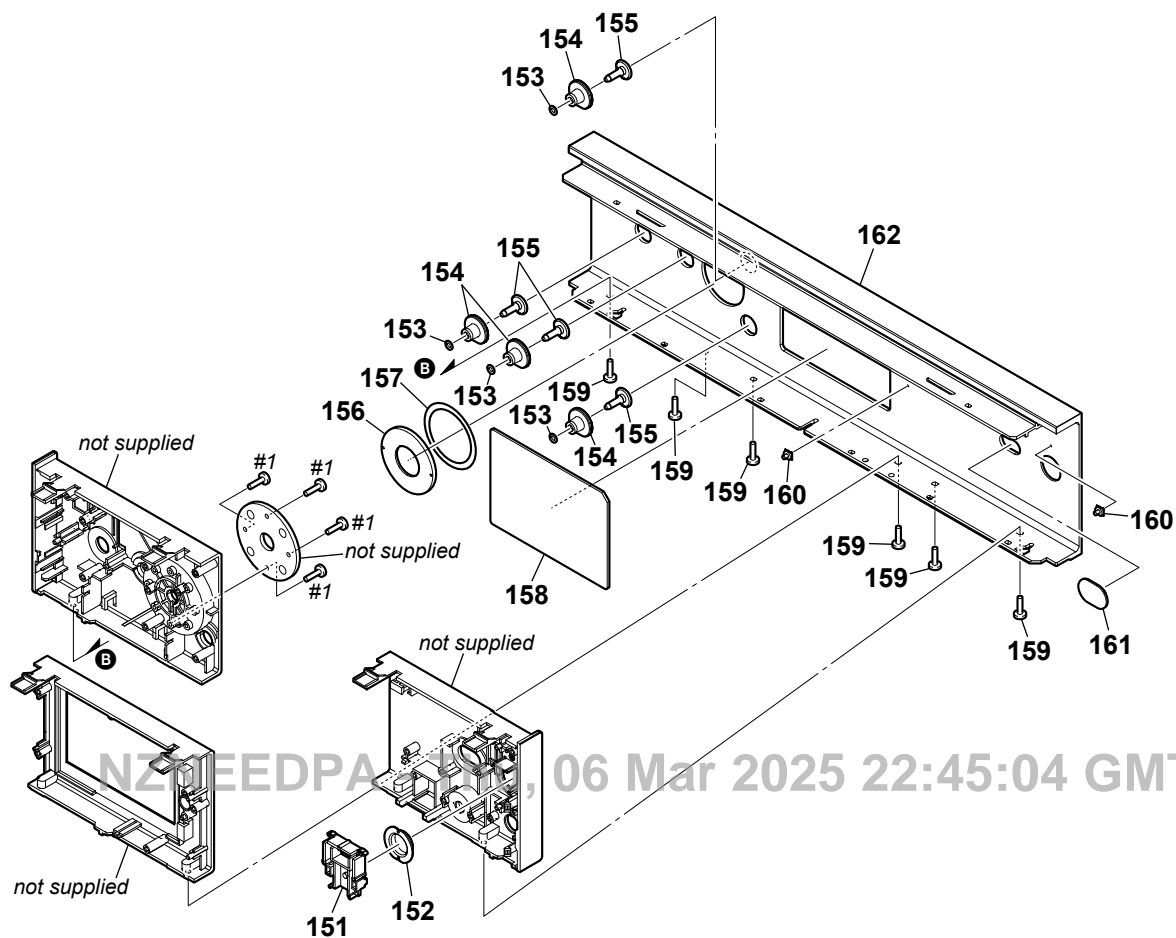


# HAP-Z1ES

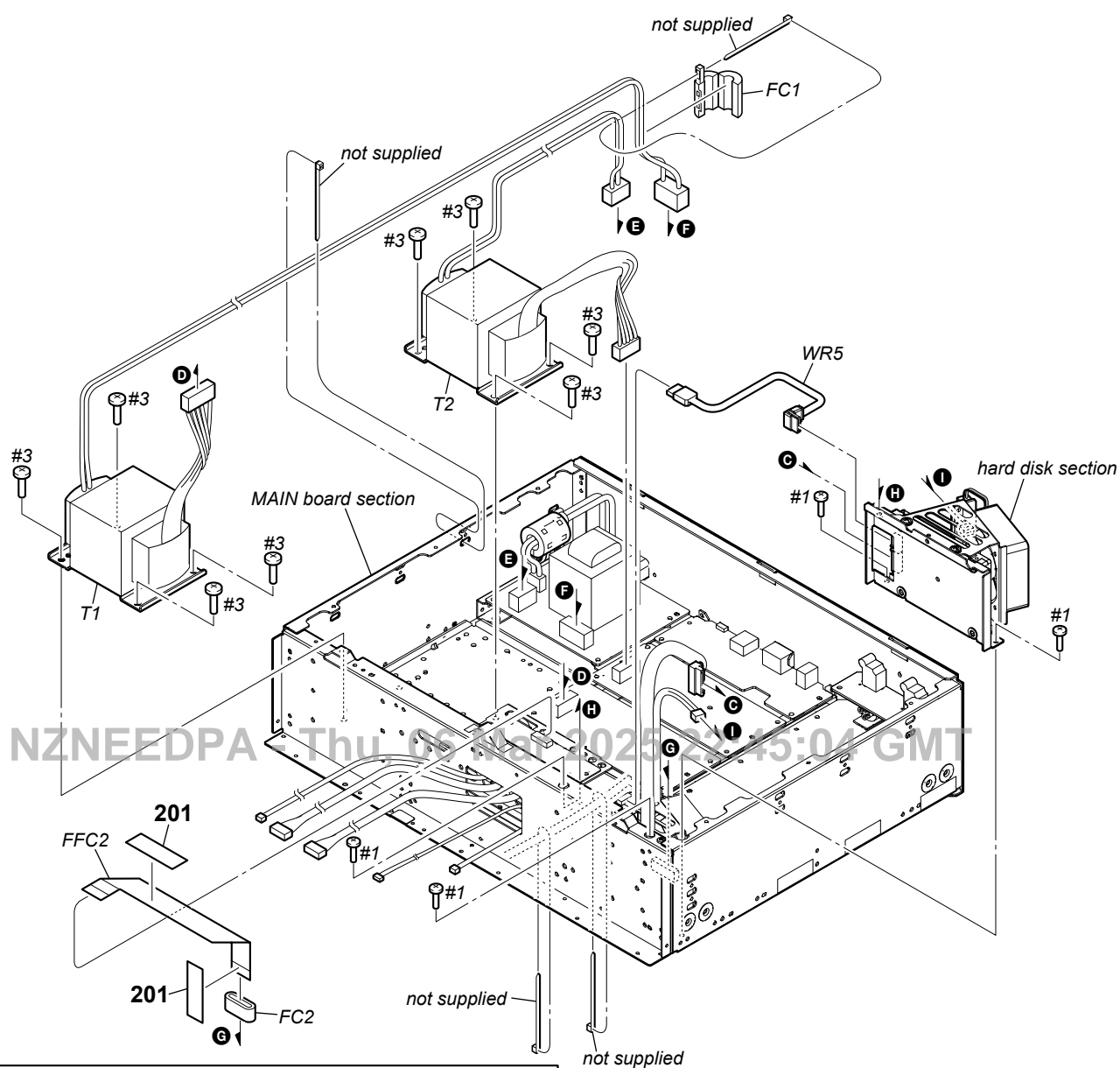
Ver. 1.1

## 6-4. FRONT PANEL SECTION

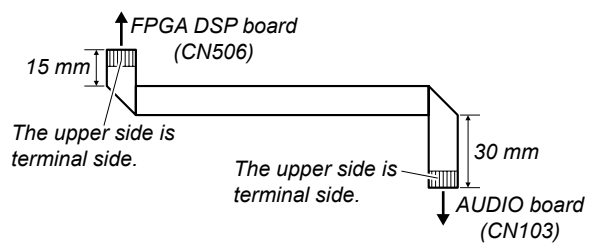
- Rear view



## 6-5. POWER TRANSFORMER SECTION

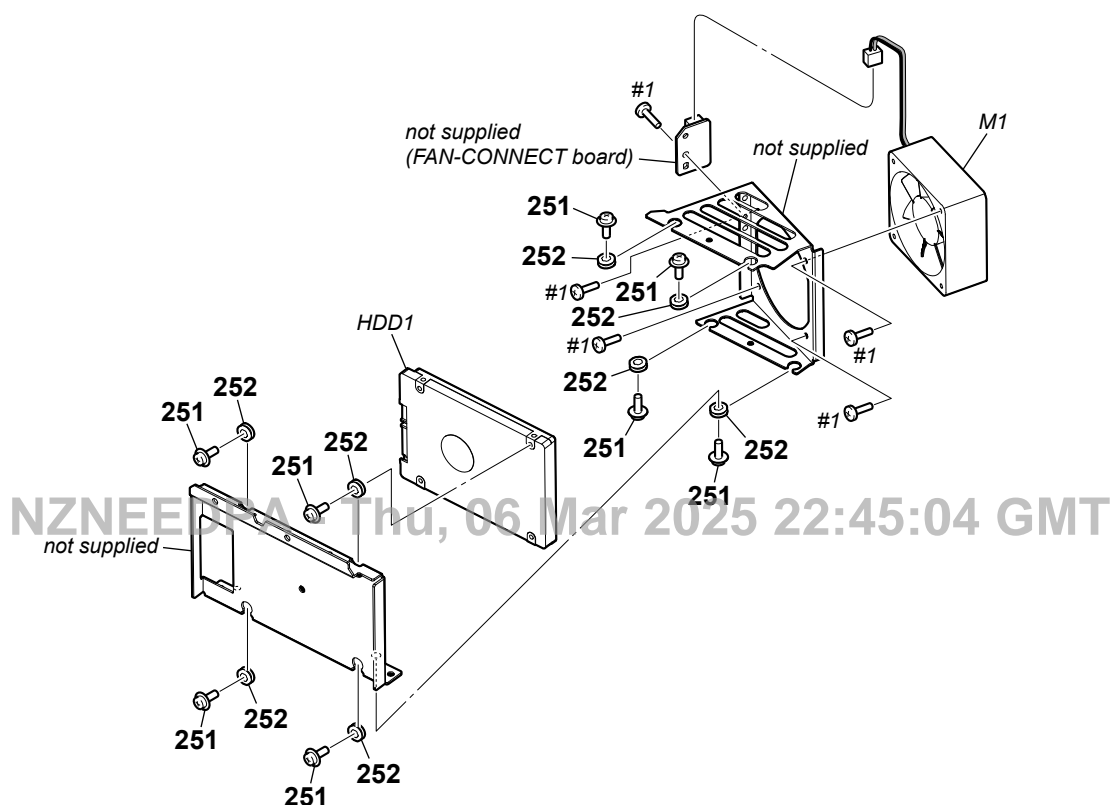


**Note:** Wire (flat type) (24 core) (Ref. No. FFC2) for service is all straight.  
When installing it, please bending it by referring to the figure below.

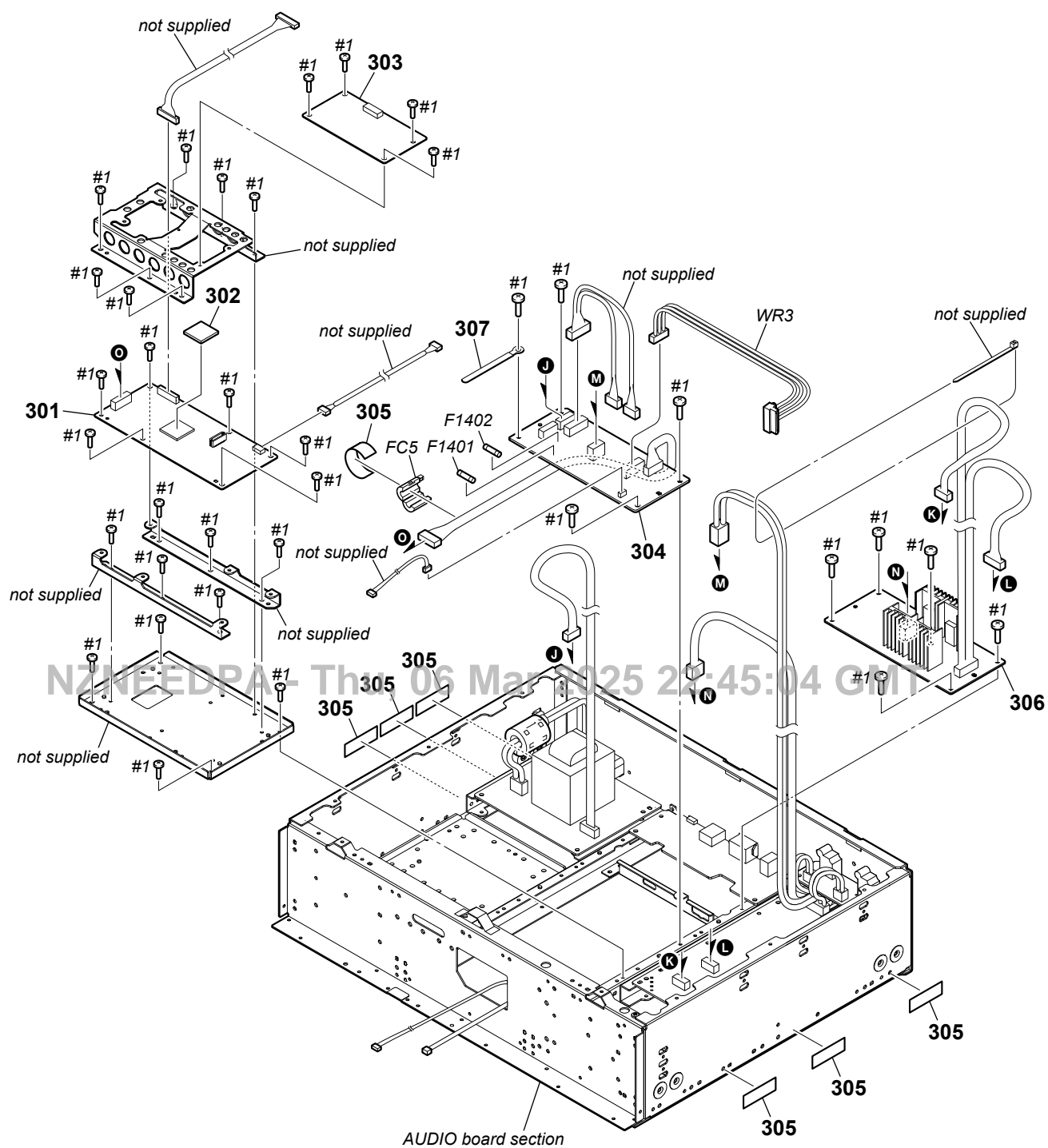


# HAP-Z1ES

## 6-6. HARD DISK SECTION



## 6-7. MAIN BOARD SECTION



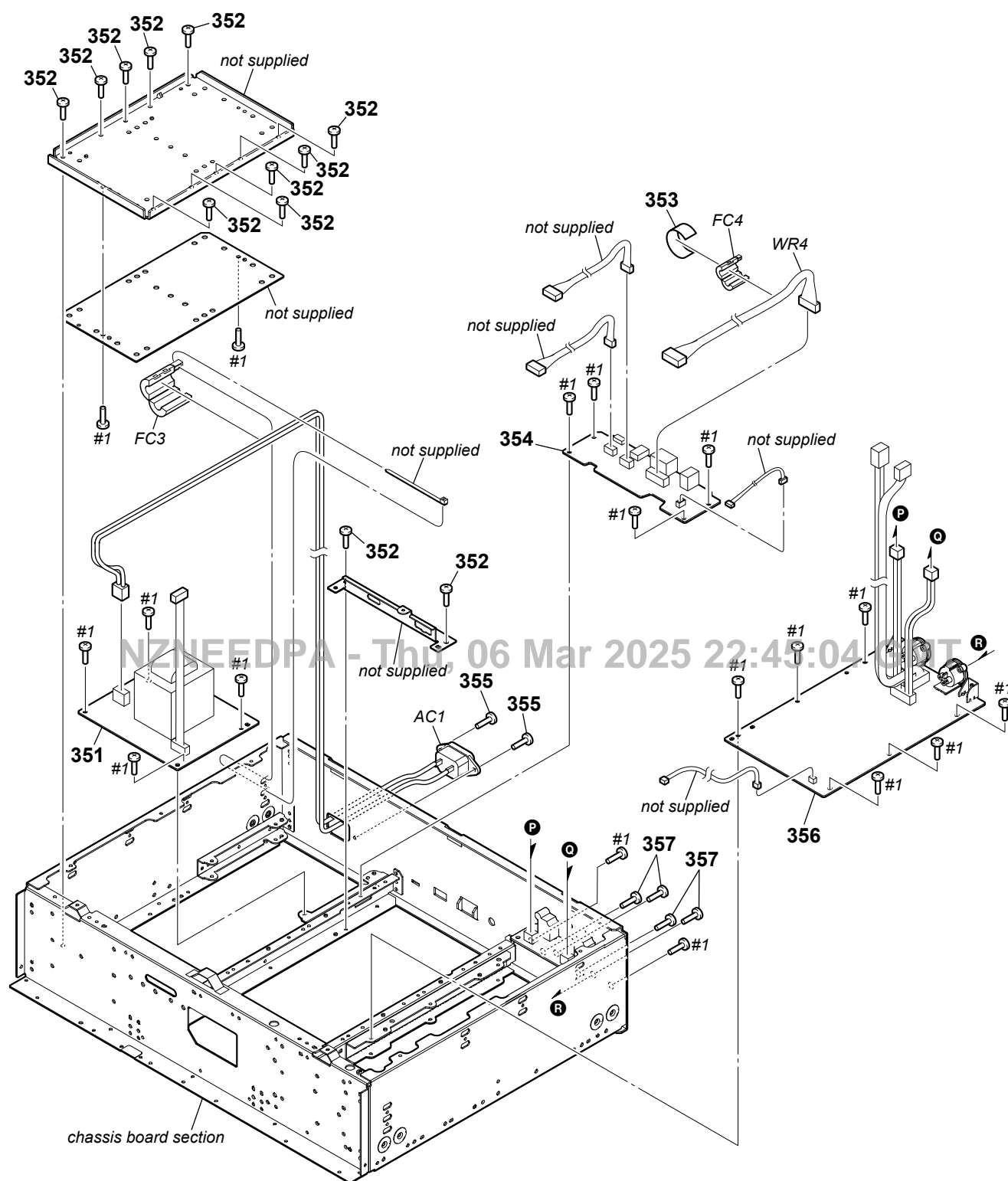
**Note:** When the complete MAIN board is replaced, refer to "NOTE OF REPLACING THE COMPLETE MAIN BOARD" and "NOTE OF REPLACING THE WLAN/BT COMBO CARD AND CHECKING METHOD OF NETWORK CONNECTION" on page 5.



# HAP-Z1ES

Ver. 1.1

## 6-8. AUDIO BOARD SECTION



## 6-9. CHASSIS SECTION

